

# BIO SCULPTURE



## PRODUCT CATALOGUE

HEALTHY | ETHICAL | PROFESSIONAL

Our purpose is to provide quality products and professional training, empowering nail technicians to offer healthy and fashionable nail care systems, guided by an ethical business approach.

BIOGEL eVÖ ETHOS GEMINI BI-OLYGEL

# INDEX

BIOGEL .04



EVO .06



BI-OLYGEL .09



NAIL ART .10



GEMINI .08



ETHOS .14



CARMEN .13



SPA .16



KITS .18



MANUALS .20



SOLUTIONS .21



SOFTS .25



BUFFS & FILES .27



UTENSILS .22



RETAIL STANDS .33



BRUSHES .29



PROMOTIONAL MATERIAL .33



CURING UNITS .31



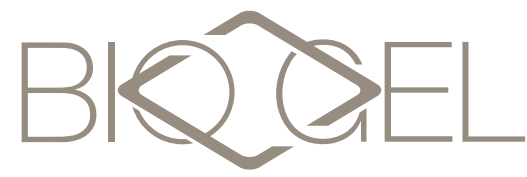
TIPS & ADHESIVES .32



BAGS .35







BIOGEL is the original, professional, soak-off, easy wear nail gel system in a jar. With a 5-star Safety Rating boasting natural nail health, while beautifully enhancing and transforming any nail. A scientifically formulated pure gel range which varies from flexible to solid, BIOGEL is suitable for every nail type and is excellent for extending & strengthening nails.

[READ MORE](#)

## TREATMENT GELS



### Base Gel

Base & Build  
4,5g Item Code: 09\_4  
10g Item Code: 09\_10  
25g Item Code: 09\_25

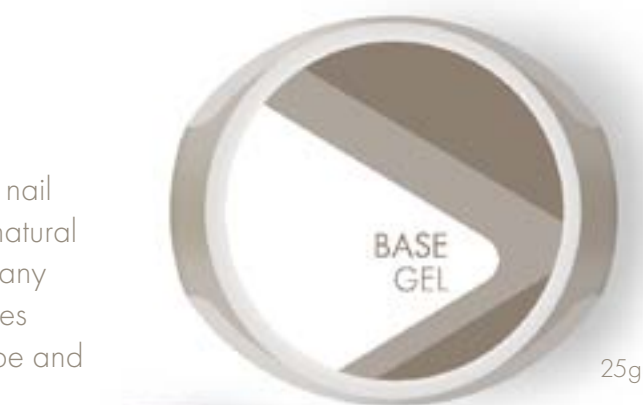
- Suitable for most nail types
- Original Base Gel
- 5 star rating
- Self-levelling
- Strengthening layer after colour for extra strength
- Silk Sculptures
- Easy soak off



### Medium Gel

Base & Build  
4,5g Item Code: 10\_4  
10g Item Code: 10\_10  
25g Item Code: 10\_25

- Suitable for medium to hard nails
- Thick gel to build high, supportive upper arches for long nails
- Build long Form + Silk sculptures
- Clarity + firmness form beautiful glass sculptures
- Reshape long, scooped nails
- Effortless wet + dry gel shaping
- Self-levelling
- Ideal for fills
- Easy soak off



### UV Sculpting Gel

Base & Build  
4,5g Item Code: 02\_4  
10g Item Code: 02\_10  
25g Item Code: 02\_25

- Suitable for damaged, thin and corrugated nails
- 1 min Spectra curing
- Self-levelling
- Silk Sculptures
- Easy soak off



### Hard Gel

Build  
4,5g Item Code: 11\_4  
10g Item Code: 11\_10  
25g Item Code: 11\_25

- Strengthening layer for medium to hard nails
- Perfect upper arch application
- Self-levelling
- Build long, firm sculptures
- Durable wear
- Easy Shaping



### Soft Gel

Base & Build  
4,5g Item Code: 12\_4  
10g Item Code: 12\_10  
25g Item Code: 12\_25

- Suitable for soft, flexible nails
- Adds strength to soft, flexible nails
- Self-levelling
- Strengthening layer after colour for extra strength
- Excellent for embedding nail art
- Silk Sculptures
- Easy soak off



### Gloss Gel

4,5g Item Code: 13\_4  
10g Item Code: 13\_10  
25g Item Code: 13\_25

- High Gloss finish
- Scratch resistant
- Seals in colour
- Beautiful overlay for weeks



### Free Edge Gel

4,5g Item Code: 05\_4  
10g Item Code: 05\_10  
25g Item Code: 05\_25

- Used to lengthen free edge of a sculpture
- Natural free edge nail colour
- Extremely firm + sturdy

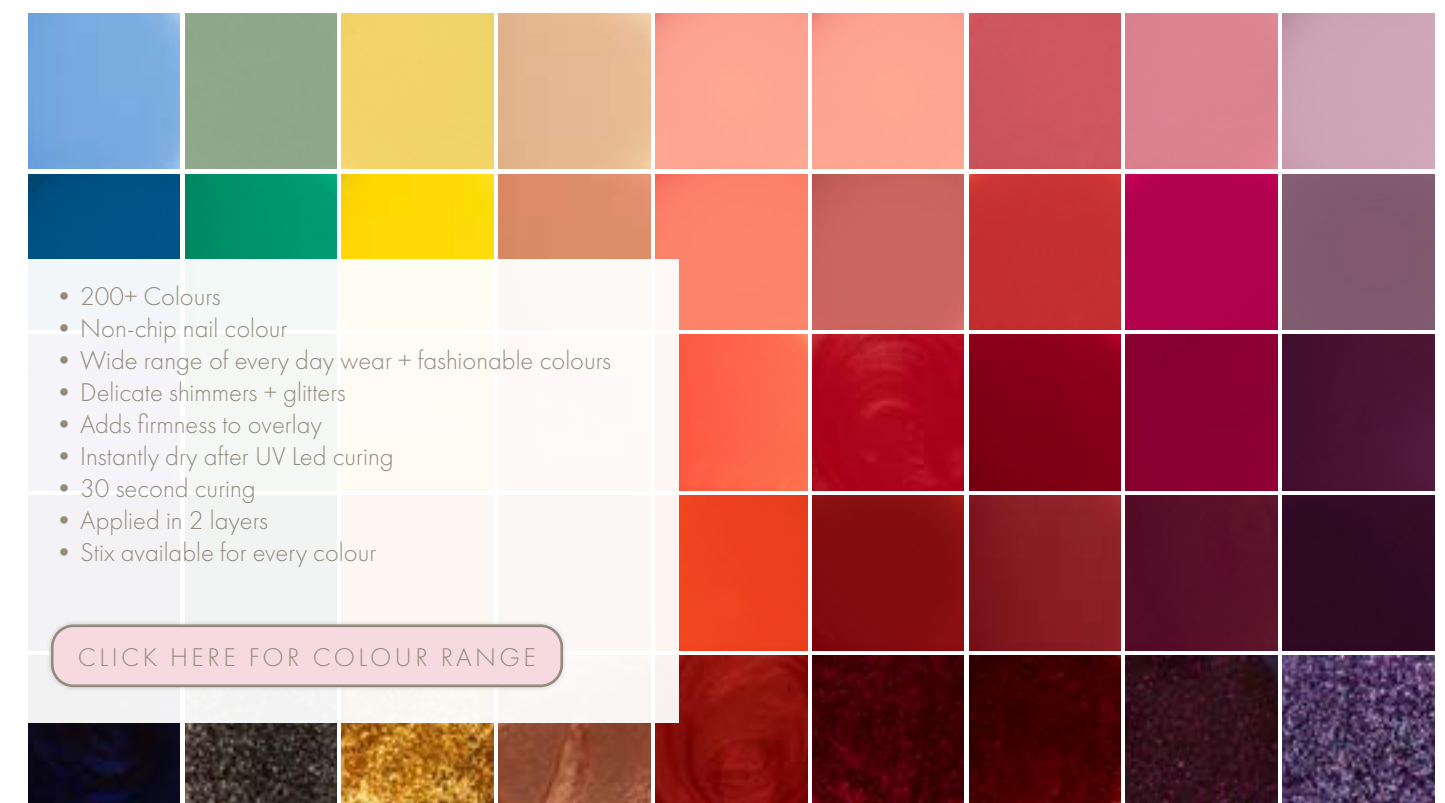


### Pink Paste

4,5g Item Code: 15\_4

- Used as a concealer
- Illusion of an extended nail plate
- Applied with a puffer

## BIOGEL COLOUR GEL RANGE



- 200+ Colours
- Non-chip nail colour
- Wide range of every day wear + fashionable colours
- Delicate shimmers + glitters
- Adds firmness to overlay
- Instantly dry after UV Led curing
- 30 second curing
- Applied in 2 layers
- Six available for every colour



EVO gel polish is quick and easy to apply. With excellent adhesive properties, EVO is an extremely durable, long-lasting, high shine gel overlay. This Gel Polish system in a bottle consists of pure Gel Bases, Colours and Top Coats.

[READ MORE](#)



**Flex**  
Base

- Ideal for soft, thin, brittle nails
- Extreme flexibility
- Flexible overlay support
- Silk sculptures

14ml Item Code: EFLEX



**Oxygenating**  
Base & Build

- Medical grade formulation
- Permeable base layer
- Infused with vitamin A & E
- Builds a strong upper arch
- Form & silk sculptures
- Glueless tips

14ml Item Code: EBASEOXY



**Contour**  
Base & Build

- Ideal for normal to strong nails
- Durable and solid
- Strong support for long nails
- Contour a perfect arch
- Form & silk sculptures

14ml Item Code: ECONTOUR



**Chrome Catalyst**  
Catalyst

- Applied before a chrome powder
- Long lasting chrome effect

12ml Item Code: E062



**Suede Matte**  
Top Coat

- Soft touch velvet finish
- Long lasting matte effect
- Non-wipe top coat

14ml Item Code: ETOPSUEDE



**Natural White**  
Free Edge Gel

- Firm natural white builder gel
- Lengthen the free edge of the nail

12ml Item Code: E003



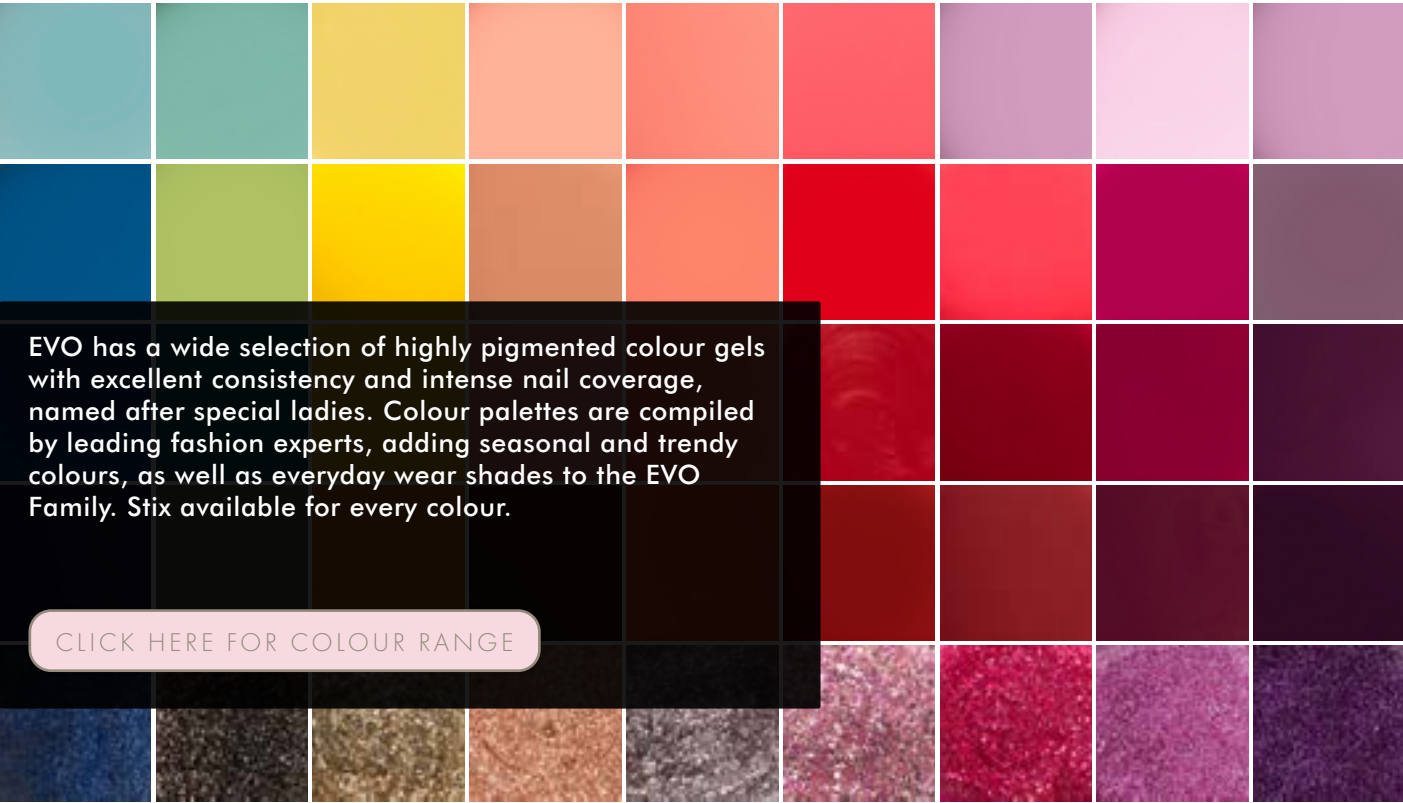
**Gloss**  
Top Coat

- Long lasting high shine
- Plumping effect
- Leaving the overlay looking beautiful for weeks

14ml Item Code: ETOPGLOSS



# EVO GEL COLOUR RANGE



EVO has a wide selection of highly pigmented colour gels with excellent consistency and intense nail coverage, named after special ladies. Colour palettes are compiled by leading fashion experts, adding seasonal and trendy colours, as well as everyday wear shades to the EVO Family. Stix available for every colour.

[CLICK HERE FOR COLOUR RANGE](#)



# GEMINI

GEMINI -representing "twins"- is Bio Sculpture's Nourishing Nail Polish which matches BIOGEL colours. 14ml of GEMINI colour is brilliantly displayed in the recognisable square bottle.

GEMINI contains hardening plant extract agents derived from Aloe Vera, Lemon and Ginseng. It is fast drying, long lasting and will add strength to the nail. Gemini has a UV filter and is Styrene Free.

READ MORE



# BI-OLYGEL

BI-OLYGEL is a UV gel, strengthened with acrylic paste to bring out the best properties of both gel and acrylic systems, creating a firm hard gel in a 30g tube, that is easy and quick to apply.

READ MORE



## Ice

30g Item Code: 200BG001

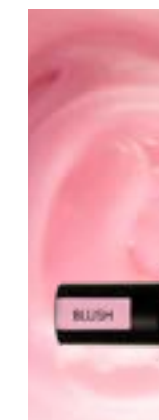
Clear Gel that can be used to create glass-like sculptures



## Blonde

30g Item Code: 200BG003

Soft nude shade Gel



## Blush

30g Item Code: 200BG005

Lovely soft natural pink Gel



## Frost

30g Item Code: 200BG002

White Gel that can be used to create a French free-edge or 3D nail art



## Glow

30g Item Code: 200BG004

Sheer pink Gel that brings a healthy glow to nails

# NAIL ART

READ MORE



## White Screed

A sturdy white builder gel used to extend a solid white free edge and create top surface nail art designs.

Art Gel 10g Item Code: 15\_10  
Art Gel 25g Item Code: 15\_25



## Liquid Glass

High viscosity nail art gel used to sculpt 3D nail art designs. Liquid Glass may be used to create clear images or it can be used in conjunction with Bio Sculpture's High Pigment Gels to build colourful nail art masterpieces.

7g Art Gel Item Code: 200STLG

# THREADING GEL

A high viscosity gel with tangy threading properties used to create effortlessly beautiful nail art.

## Black

Threading Gel 4,5g Item Code: 19\_4



## Silver

Threading Gel 4,5g Item Code: 21\_4



## Red

Threading Gel 4,5g Item Code: 23\_4



## White

Threading Gel 4,5g Item Code: 18\_4



## Gold

Threading Gel 4,5g Item Code: 20\_4



## Blue

Threading Gel 4,5g Item Code: 22\_4



# HP GEL

Highly pigmented gels, used by award winning nail technicians all over the world. HP gels are extremely easy to work with and allow for endless nail art creations

## Pink

3g HP Art Gel Item Code: 200ST001



## Purple

3g HP Art Gel Item Code: 200ST002



## Navy Blue

3g HP Art Gel Item Code: 200ST003



## Turquoise

3g HP Art Gel Item Code: 200ST004



## Red

3g HP Art Gel Item Code: 200ST005



## Yellow

3g HP Art Gel Item Code: 200ST008



## Green

3g HP Art Gel Item Code: 200ST010



## Black

3g HP Art Gel Item Code: 200ST011



## White

3g HP Art Gel Item Code: 200ST012



## Gold

3g HP Art Gel Item Code: 200ST013



## Silver

3g HP Art Gel Item Code: 200ST014



# NAIL ART KIT

BIO SCULPTURE's Nail Art Kit comes fully equipped with everything you need to start off your Nail Art Career. The kit consists of:

- 8 primary colour high pigmented gels, these HP gels are used by award winning nail technicians all over the world. HP gels are extremely easy to work with and allow for endless nail art creations
- 8 Stencils. Stencils are a quick and effective tool used to create effortlessly beautiful nail art, Stencils are only a 'puff' away from a perfect design
- 8 puffers. Puffers are used apply HP gels to the nail, create stencil designs and help achieve the perfect Ombre.
- 1 Metal plate used as a creative plate to mix and decant high pigment gels

Item Code: KIT/431





# STENCILS



## Festive Stencils

Stencils are a quick and effective tool used with HP gels to create effortlessly beautiful nail art, Stencils are only a ‘puff’ away from a perfect design.

Pack of 5 | Item Code: NART/941



## Stencils French Circle

A French circle stencil pack used with HP gels to help create the perfect French smile line.

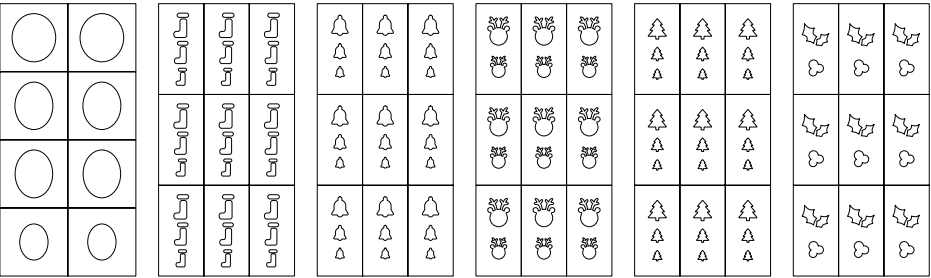
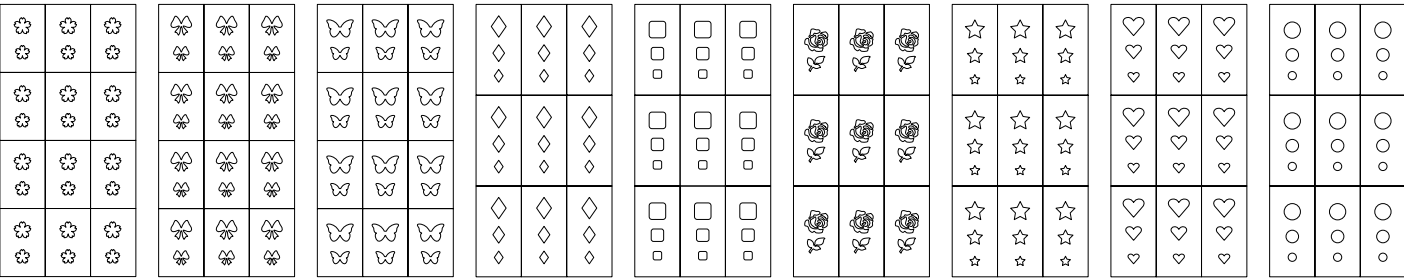
Pack of 4 | Item Code: NART/938



## Shape Stencils

Stencils are a quick and effective tool used with HP gels to create effortlessly beautiful nail art, Stencils are only a ‘puff’ away from a perfect design.

Pack of 9 | Item Code: NART/940



# CARMEN

Carmen perfume is youthful and light, with smooth warming elements carrying the fragrance of a sacred love that lingers. A refreshingly happy celebration of life!

READ MORE



## 100ml Carmen

100ml Item Code: 350/100



## 15ml Carmen

15ml Item Code: 350/14



## Carmen Scent Stick

Pack of 50 | Item Code: PRO/1637



## Carmen Stand

Item Code: STAND/CPS



celebrating life

# ETHOS

ETHOS is the natural nail care range by BIO SCULPTURE, pledged to nail health. The unique property of the key natural ingredient in each individual treatment is discretely displayed on its bottle. Ideal for professional salon use and home care.

READ MORE



## Almond Oil

- All nail types
- Infused with almond oil and extracts to combat dry nails and cuticles
- Contains almond, jojoba, avocado and vitamin E oils, to rehydrate nails and keep cuticles supple
- Apply to dry cuticles and massage well

14ml | Item Code: 302/14



## Vitamin Dose

- All nail types
- A combination of vitamins to rejuvenate, moisturise and nourish nails
- Infused with ginseng root extract to sustain the keratin structure and cell metabolism of the nail
- Apply before gel application and during gel removal

14ml | Item Code: 303/14



## Cuticle Remover

- All nail types
- Specially designed to soften hard, dry and stubborn cuticles during nail preparation
- Apply to cuticle area, leave on for two minutes then remove overgrown dead skin on nail plate
- Wash hands thoroughly after use

14ml | Item Code: 300/14



## Kiwi Scrub

- All nail types
- Specially designed to soften hard, dry and stubborn cuticles during nail preparation
- Apply to cuticle area, leave on for two minutes then remove overgrown dead skin on nail plate
- Wash hands thoroughly after use

14ml | Item Code: 318/14



## Special Prep Solution

- Nails that tend to shed nail enhancements
- A Special Prep Solution
- Acid-free pre-gel treatment
- Increases product adhesion
- Maintains a healthy moisture balance
- Apply to the centre of each nail before gel application
- Professional use only

14ml | Item Code: 320/14



## Volcanic Base

- Weak and brittle nails
- Enriched by volcanic stone extract to give strength to soft nails
- Rich in pistachio oil to help increase nail hardness as well as flexibility
- Apply a thin brush width to the centre of the nail before gel application or entire nail before nail polish

14ml | Item Code: 316/14



## Lavender Base

- Weak and damaged nails
- Rosemary leaf extract and carefully selected oils to sooth, treat and restore damaged nails
- Apply a thin brush width to the centre of the nail before gel application or entire nail before nail polish

14ml | Item Code: 304/14



## Seaweed Calcium Base

- Hard, dry, brittle and ridged nails
- Red alga seaweed extract to help strengthen keratin structures, increasing flexibility and suppleness to brittle nails
- Silica and mica leaving a smooth nail surface on ridged nails
- Apply a thin brush width to the centre of the nail before gel application or entire nail before nail polish

14ml | Item Code: 317/14



## Mirror Top Coat

- Smooth and silky nail polish finish
- Plumping effect that increases brilliancy of nail colour
- Resists scratching
- Long lasting, high gloss mirror-like shine

14ml | Item Code: 306/14



## Oxycoat

- Vitamins and plant extracts that will nourish and hydrate nails
- Botanical extracts that will revitalise and brighten nails
- Bamboo isoflavones which have high antioxidant properties
- Permeable when used as a base for GEMINI colour and as a top coat

14ml | Item Code: 304/14

## ETHOS 50ML REFILLS



### Cuticle Remover

Item Code: 300/50



### Vitamin Dose

Item Code: 303/50



### Almond Oil

Item Code: 302/50



# SPA

Inspired by nature, BIO SCULPTURE's tranquil SPA treatment range can be used in salon or at home. Specially blended and formulated to exfoliate, hydrate, protect, and soften the skin and cuticles. Delivering essential nutrients to rejuvenate the health and beauty of your skin and nails.

READ MORE



## Potpourri Aqua Soak

Delightful, citrus scented bath and foot-spa soak that soothes and softens the skin.

180g Item Code: 501/250  
540g Item Code: 501/750



## Hand & Body Butter

A rich textured moisturiser for dry and dehydrated skin, leaving a healthy looking glow.

250ml Item Code: 505/250  
750ml Item Code: 505/750



## Apricot Kernel Scrub

Cream scrub for gentle exfoliation with natural apricot kernels and pumice.

100ml Item Code: 503/100  
250ml Item Code: 503/250  
750ml Item Code: 503/750



## Potpourri Salt Scrub

- Exfoliating sea salt scrub with light botanical oils and real rose petals.
- Leaves skin silky smooth and heavenly scented.

250g Item Code: 502/250  
750g Item Code: 502/750



## Heel Balm

A treatment which moisturises heel skin.

100ml Item Code: 510/100  
250ml Item Code: 510/250  
750ml Item Code: 510/750



## Mint Mask

Moisturising mask that creates a lovely cooling effect, leaving skin feeling relaxed, nourished and rejuvenated.

100ml Item Code: 504/100  
250ml Item Code: 504/250  
750ml Item Code: 504/750



## Cuticle Cream

Enriched with essential oils for ultimate cuticle hydration.

20ml Item Code: 507/100



## Hand Wash

Soft, refreshing silk-textured liquid soap with a beautiful geranium fragrance.

200ml Item Code: 509/200  
1 l Item Code: 509/1L



## Hand & Body Lotion

Moisturises and nourishes, leaving skin smooth. Ideal as a home care product.

200ml Item Code: 508/200  
1 l Item Code: 508/1L

# KITS



## Complete Training Kit

(5 day career training) Item Code: KIT/414

- Carry Bag
- Home Care Bag
- BIOGEL Manual
- EVO Manual
- Spa Training Manual
- Client Record Card
- BI-OLYGEL Brochure
- BIOGEL Brochure
- Evo Brochure
- V3 LED Unit
- LED Adaptor
- Technician Badge
- 4.5g BIOGEL Base Gel
- 4.5g BIOGEL Soft Gel
- 4.5g BIOGEL Medium Gel
- 4.5g BIOGEL Free Edge Gel
- 4.5g BIOGEL Gloss Gel
- 4.5g BIOGEL Gel No. 1 French White
- 4.5g BIOGEL Gel No. 30 Triginta
- 14ml ETHOS Oxycoat
- 14ml ETHOS Cuticle Remover
- 14ml ETHOS Almond Oil
- 14ml ETHOS Vitamin Dose

- 14ml ETHOS SPS
- 14ml ETHOS Mirror Top Coat
- 14ml GEMINI Polish No. 30
- GEMINI 5 Empty Collection Pack
- 200ml Cleanser (Menda Pump)
- 200ml Gel Remover (Spout)
- 50ml Surface Cleaner & S/Pump
- 50ml Hygiene Prep & S/Pump
- 250ml Potpourri Aqua Soak
- 100ml Apricot Kernel Scrub
- 100ml Mint Mask
- 250ml Hand & Body Butter
- Spa Spatula
- Thin Black File 150/200 Grit (6)
- Multi-File Handle (2)
- Orange Spear Patch (100/100)
- Grey Square Patch (220/220)
- Black File Patch (180)
- Blue File Patch (100)
- Gold File (100/100)
- Metal Tool Large
- Side Blade Cutter
- Metal Pick

- Bio Tweezers
- Gel Brush Holder
- Large Metal Stirrer
- Straight Blade Silver Stork Scissors
- Finger Rest
- Tip Box
- Nail Wipes
- Silk Strip
- Advanced Nail Forms (50)
- Upper Arch Brush
- Gel Brush #6 Round
- Gel Brush #4 Round
- Gel Brush #4 French
- Nail Brush
- Mask Brush
- 12ml EVO Oxygenating Base & Build
- 12ml EVO Flex Base
- 12ml EVO Contour Base & Build
- 12ml EVO Gloss Top Coat
- 12ml EVO Gel No. 006 Annabelle
- 12ml EVO Gel No. 001 Whitney (W)
- 12ml EVO Cleanser (5)
- 12ml EVO Remover (5)

## EVO Starter Kit

Item Code: KIT/EVOSTART

- EVO LED Curing Unit
- EVO Booklet
- Photo Sheet
- 12ml EVO Oxygenating Base
- 12ml EVO Gloss Top Coat
- 12ml EVO Colour Gel
- Cleanser Sachets (20)
- Remover Sachets (40)
- Hygienic File
- Orange Patch
- Grey Patch
- Small Black File
- Metal Pick



## BI-OLYGEL Kit

Item Code: KIT/416

- 50ml BI-OLYGEL Slide Solution
- Silicon Tool
- Sculpture Mould (100)
- 30g BI-OLYGEL Blonde
- 30g BI-OLYGEL Frost
- 30g BI-OLYGEL Ice
- BI-OLYGEL Brush
- Clips (10)
- Purple Buff 80 Grit
- White Patch 80 Grit (2)
- Advanced Nail Forms (50)
- Dampen Dish
- Pedicure Bag
- BI-OLYGEL Technician Manual
- BI-OLYGEL Brochure



## BIOGEL Training Kit

Item Code: KIT/415

- Carry Bag
- Home Care Bag
- BIOGEL Manual
- Client Record Card
- BI-OLYGEL Brochure
- BIOGEL Brochure
- EVO Brochure
- V3 LED Unit
- LED Adaptor
- Technician Badge
- 4.5g BIOGEL Base Gel
- 4.5g BIOGEL Soft Gel
- 4.5g BIOGEL Medium Gel
- 4.5g BIOGEL Free Edge Gel
- 4.5g BIOGEL Gloss Gel
- 4.5g Gel No. 1 French White
- 4.5g Gel No. 30 Triginta
- 14ml ETHOS Oxycoat
- 14ml ETHOS Cuticle Remover
- 14ml ETHOS Almond Oil

- 14ml ETHOS Vitamin Dose
- 14ml ETHOS SPS
- 14ml ETHOS Mirror Top Coat
- 14ml GEMINI Polish No. 30
- GEMINI 5 Empty Collection Pack
- 200ml Cleanser (Menda Pump)
- 200ml Gel Remover (Spout)
- 50ml Surface Cleaner & S/Pump
- 50ml Hygiene Prep & S/Pump
- Thin Black File 150/200 Grit (6)
- Multi-File Handle (2)
- Orange Spear Patch (100/100)
- Grey Square Patch (220/220)
- Black File Patch (180)
- Blue File Patch (100)
- Gold File (100/100)
- Metal Tool Large
- Side Blade Cutter
- Metal Pick
- Gel Brush Holder

- Large Metal Stirrer
- Straight Blade Silver Stork Scissors
- Tip Box
- Nail Wipes
- Silk Strip
- Advanced Nail Forms (50)
- Upper Arch Brush
- Gel Brush #6 Round
- Gel Brush #4 Round
- Gel Brush #4 French
- Nail Brush



## Home Care Retail Pack

Item Code: KIT/401

- 14ml ETHOS Kiwi Scrub
- 14ml ETHOS Vitamin Dose
- 14ml ETHOS Lavender Base
- 14ml ETHOS Almond Oil
- Thin Black File
- Evo Remover Sachets (12)



## EVO Training Kit

Item Code: KIT/EVOTRAIN

- Conversion Kit Bag
- EVO Manual
- Client Record Card
- BI-OLYGEL Brochure
- BIOGEL Brochure
- EVO Brochure
- Technician Badge
- EVO LED Lamp In Box
- EVO Adaptor
- 12ml EVO Oxygenating Base & Build
- 12ml EVO Flex Base
- 12ml EVO Contour Base & Build
- 12ml EVO Gloss Top Coat
- 12ml EVO Gel No. 006 Annabelle
- 12ml EVO Gel No. 001 Whitney (W)
- 12ml EVO Natural White
- EVO Cleanser (5)

- EVO Remover (5)
- 14ml ETHOS Oxycoat
- 14ml ETHOS Cuticle Remover
- 14ml ETHOS Almond Oil
- 14ml ETHOS Vitamin Dose
- 14ml ETHOS SPS
- GEMINI 5 Empty Collection Pack
- 200ml Cleanser (Menda Pump)
- 200ml Gel Remover (Spout)
- 50ml Surface Cleaner & S/Pump
- 50ml Hygiene Prep & S/Pump
- Nail Wipes
- Silk Strip
- Advanced Nail Forms(50)
- Thin Black File 150/200 Grit(6)
- Multi-File Handle(2)
- Orange Spear Patch (100/100)

- Grey Square Patch (220/220)
- Black File Patch (180)
- Blue File Patch (100)
- Gold File (100/100)
- Metal Tool Large
- Side Blade Cutter
- Metal Pick
- Bio Tweezers
- Large Metal Stirrer
- Straight Blade Silver Stork Scissors
- Tip Box
- Gel Brush #6 Round
- Nail Brush
- EVO Nail Art Brush (In Bottle)
- EVO French Bruch (In Bottle)



# MANUALS

BIO SCULPTURE’s professional gel products are available to nail technicians through brand training. As a training-based system, BIO SCULPTURE endorses the highest standard globally and produces award winning nail technicians worldwide.

There is a specialised manual for each and every one of our training modules. These manuals will assist you in becoming a certified BIO SCULPTURE technician.

Once you are a qualified BIO SCULPTURE nail technician make sure you have the latest manual and are up to date with the newest application methods.

## Nail Art Manual

Item Code: MAN/1600



## BIOGEL Technician Manual

Item Code: MAN/1603



## EVO Technician Manual

Item Code: MAN/EVO



## BI-OLYGEL Technician Manual

Item Code: MAN/1628



## SPA Technician Manual

Item Code: MAN/1605



# SOLVENTS

BIO SCULPTURE has a range of specially designed solvents in convenient sizes. Tried and tested to compliment all of our product lines.



## Quick Dry

Spray on nails after nail polish is applied to help nail polish manicure dry quickly.

200ml Item Code: 707/200



## Dilute

Dilutes dry, thickened nail polish.

50ml Item Code: 706/50



## Techniclean

Waterless hand cleanser. Alcohol percentage of 55.05%.

100ml Item Code: 511/100



## Hygiene Prep

Spray to sanitise files, utensils and clients nails. Used with nail plate separation or fungal infection.

50ml Item Code: 710/50  
200ml Item Code: 710/200



## Slide Solution

Slide Solution is a wetting solution, used to keep the BI-OLYGEL moist and easy to manipulate when shaping or building BI-OLYGEL overlays and sculptures.

50ml Item Code: 711/50  
200ml Item Code: 711/200



## Cleanser

Cleanser is formulated using active ingredients that help prevent dehydration of the nail and surrounding skin, with a soft pink tint for easy identification and a pomegranate and mint scent to enhance your treatment experience. Cleanser allows for quick nail polish removal as well as effortless cleansing during and after gel application.

200ml Item Code: 703/200  
1 l Item Code: 703/1L



## Gel Remover

Gel Remover is formulated using active ingredients that help prevent dehydration of the nail and surrounding skin. Specially designed to improve the gel removal process, with a soft green tint for easy identification and an Aloe Vera scent to enhance your treatment experience.

200ml Item Code: 705/200  
1 l Item Code: 705/1L



## Surface Cleaner

Registered as a BFR Biocidal. Alcohol percentage of 70.45%. Used in private, public and industrial areas to disinfect surfaces, materials, equipment and furniture.

200ml Item Code: 709/200  
1 l Item Code: 709/1L

# UTENSILS



## Gel Brush Holder

Hold and organise gel brushes and utensils during treatments.

Item Code: UT/800



## Metal Tool

Push back cuticles, prepare nail plate and remove excess gel during soak off process Available in small or large.

Large Metal Tool Item Code: UT/802/L  
Small Metal Tool Item Code: UT/802/S



## Edge Cutter

Shorten free edge length on tips during preparation and gel removal.

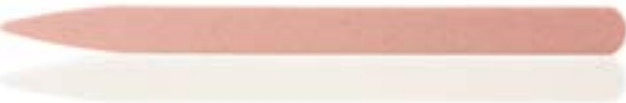
Item Code: UT/811



## Bio Tweezers

Assists in soak off process to pick up and place the cotton square soaked in Gel Remover onto clients nails to avoid over exposure to product. Shape and squeeze a perfect C-Curve when building Silk Sculptures.

Item Code: UT/810



## Cuti-Stone

Remove loose dead skin around cuticles and side walls during nail plate preparation.

Item Code: UT/803



## Metal Stirrer

Stir, mix and fold BIOGEL colour gels.

Large Metal Stirrer Item Code: UT/809/L  
Small Metal Stirrer Item Code: UT/809/S



## Silicone Tool

Specially designed tool used to create beautiful and effortless 3D BI-OLYGEL nail art.

Item Code: UT/NA492



## Dotting Tool

Create various nail art techniques.

Purple | Tool Item Code: UT/816/P  
Crystal | Metal Tool Item Code: UT/816/C



## Cuticle Nipper

Nip excess dead cuticles during nail plate preparation.

Item Code: UT/805



## Sapphire Tool

Push back cuticles, file free edge of nails and remove dust from nail.

Item Code: UT/807



## Straight Blade Silver Stork Scissors

Long blade scissor used to cut silk and cut nail forms.

Item Code: UT/813/SB



## Side Blade Cutter

Cut hang nails and loose skin during nail plate preparation

Item Code: UT/804



## Large Nail Clipper

Shorten nail length

Item Code: UT/818





**Finger Rest**

Rest clients finger during Glueless Tip or detailed Nail Art application.

Item Code: UT/817



**Dampen Dish**

Hold BI-OLYGEL Slide Solution while working with BI-OLYGEL, Gel Remover when cleaning gel brushes and Alcohol for certain nail art techniques.

Item Code: UT/815



**Puff with Silver Handle**

Puffers are used apply HP gels to the nail, create stencil designs and help achieve the perfect Ombre.

Pack of 2 | Item Code: UT/924

**SOFTS**



**Cotton Squares**

Used for gel and polish removal and to remove the sticky residue once gel is cured.

Pack of 200 | Item Code: SFT/901



**Wonderwipes**

Cotton roll used for gel and polish removal or to remove the sticky residue once gel is cured.

Pack of 6 | Item Code: SFT/902



**Metal Pick**

Remove gel or nail polish that has touched skin around the nail.

Item Code: UT/822



**Prep Dish**

Hold Gel Remover when cleaning brushes, solutions for nail art or mix Hp gels for nail art techniques.

Item Code: UT/823



**Silk Strip**

Used to create silk sculptures and repair breaks in nails.

Item Code: SFT/904



**Advanced Nail Forms**

Effective alignment with nail side wall  
May be shaped, cut and moulded to fit any nail type.  
Adhesive, creating a strong connection when building sculptures.

Pack of 152 | Item Code: SFT/905/A



**Metal Plate**

Used as a creative plate to mix and decant high pigment gels.

Item Code: UT/934



**EVO Gel Magnet**

A magnet used to create a magnetic line effect for selected EVO Gels.

Item Code: UT/E/MAGNET/5D



**Cotton Wipes**

Cotton nail wipes used during Gel and Nail Polish application.

Pack of 200 | Item Code: SFT/906



**Nail Wipes**

Lint free nail wipes used during Gel and Nail Polish application.

Pack of 360 | Item Code: SFT/903



## Latex Gloves

Disposable latex gloves.

Pack of 100 | Item Code: SFT/908



## Bio Gloves

Fingerless gloves used to protect and keep clients hands warm during Gel Removal as well as Overlays.

Pack of 2 | Item Code: SFT/907



## Tootseez

Tootseez are used to separate toes during pedicures.

Pack of 2 | Item Code: SFT/912



## Soakies

Soakies are used to assist in gel removal to hold Nail Foils and EVO Remover Sachets in place.

Pack of 10 | Item Code: SFT/920



## Disposable Apron

Disposable plastic apron.

Pack of 100 | Item Code: SFT/913



## Nail Foils

Pre-cut foil squares used during the removal process.

Pack of 400 | Item Code: SFT/919

# BUFFS & FILES



## Turquoise Shiner

Ultra-fine turquoise buff used to buff and shine natural nails. 400/3000 grit.

Pack of 10 | Item Code: BF/1001



## Blue Teardrop

Fine blue file used to shape the free edge of natural nails. 200/240 grit.

Pack of 10 | Item Code: BF/1003



## Sponge Board

Orange and Purple sponge board used to refine and shape gel layers. 100/180 grit.

Pack of 10 | Item Code: BF/1006



## Grey Square

Fine grey sponge buff board used to refine natural nails. 220/220 grit.

Pack of 10 | Item Code: BF/1004



## Orange Spear

Coarse grit orange sponge spear used to refine and shape gel layers. 100/100 grit.

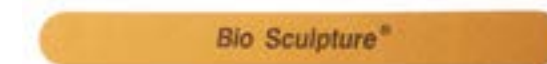
Pack of 10 | Item Code: BF/1007



## Purple Buff

BI-OLYGEL 80 Grit Purple Buff is used to swiftly shape and buff BI-OLYGEL 80 grit.

Pack of 5 | Item Code: BF/1020



## Gold File

A coarse grit file used to file top layers of gel or acrylic during product removal. 100/100 grit.

Pack of 10 | Item Code: BF/1009



## Thin Black File

Small, mini thin black fine used to shape free edge of natural nails, assist in nail preparation and gel removal. 150/200 grit.

Pack of 6 | Item Code: BF/1008



## Black Teardrop

Medium grit file used to shape the free edge of natural nails. 100/180 grit.

Pack of 10 | Item Code: BF/1005/G



## Pink Teardrop

Fine pink file used to shape the free edge of natural nails. 280/320 grit.

Pack of 10 | Item Code: BF/1002





## Multi-File Handle

Hygienic file handle used with disposable stick-on file or buff patches.

Pack of 2 | Item Code: BF/1010



## White Patch

Pack of 20 | Item Code: BF/1021

BI-OLYGEL White Patch is used on a Multi-file Handle to hygienically assist with a quicker and more efficient removal process. (80 grit)



## Blue Patch

Pack of 20 | Item Code: BF/1013

Coarse grit blue file patch used on a Multi-file Handle to file top layers of gel or acrylic during product removal. (100 grit)



## Black Patch

Pack of 20 | Item Code: BF/1011

Fine black file patch used on a Multi-file Handle to shape the free edge of natural nails. (240 grit)



## Grey Patch

Pack of 10 | Item Code: BF/1004/P

Fine grey sponge buff patch used on a Multi-file Handle to refine natural nails. (220 grit)



## Orange Patch

Pack of 10 | Item Code: BF/1007/P

Coarse grit orange sponge patch used on a Multi-file Handle to refine and shape gel layers. (100 grit)



## Large Pedi-Paddle

Hygienic file handle used with disposable stick-on Pedi-Paddle Refills to remove dry and dead skin from the bottom of feet.

Item Code: BF/1015



## Large Pedi-Paddle Refills

Large Pedi-Paddle stick-on refills.

Pack of 20 | Item Code: BF/1015/R

# BRUSHES



## No. 4 Flat Brush

Flat bristle brush used to apply BIOGEL and create nail art designs.

Item Code: BR/111/4F



## No. 4 Round Brush

Round bristle brush used to apply BIOGEL and create nail art designs.

Item Code: BR/111/4R



## No. 4 Smiley Brush

Round bristle brush used to create nail art designs and the perfect french smile line.

Item Code: BR/111/4S



## No. 4 French Brush

Slanted bristle brush used to create nail art designs and the perfect french smile line.

Item Code: BR/111/WF



## No. 4 French Brush Crystal

Slanted bristle brush used to create nail art designs and the perfect french smile line.

Item Code: BR/111/WFC



## No. 6 Flat Brush

Flat bristle brush used to apply BIOGEL and create nail art designs.

Item Code: BR/112/6F



## No. 6 Round Brush

Round bristle brush used to apply BIOGEL and create nail art designs.

Item Code: BR/112/6R



## No. 6 Flat Retractable Brush

Flat bristle brush used to apply BIOGEL and create nail art designs.

Item Code: BR/113/6R



## Fine Art Brush

High quality fine brush tip allows the technician to achieve the finest detailing and line work. Ideal for hand painting small and intricate designs.

Item Code: BR/114/FN



## Nail Art Brush

Short small bristle brush used to create nail art designs.

Item Code: BR/114/1N



## Upper Arch Brush

Long, thin brush tip used to build an upper arch and create fine detail nail art.

Item Code: BR/115/UA



## BI-OLYGEL Handle Brush (2in1)

Specially shaped bristles to assist in contouring BI-OLYGEL when used in conjunction with Slide Solution.

Item Code: BR/120/BHB



## Dusting Brush

Soft bristle brush used to remove dust from clients hands and surfaces.

Item Code: BR/117



## EVO French Brush (In Bottle)

Slanted brush tip in an EVO bottle used to create a perfect French smile line.

Item Code: BR/E/FRENCH



## EVO Nail Art Brush (In Bottle)

Long, thin brush tip in an EVO bottle used to build an upper arch and create fine detail nail art.

Item Code: BR/E/NAILART



## Mask Brush Silver

A soft bristle brush used to apply Mint Mask during manicures or pedicures.

Item Code: BR/118/S



## Massage Brush

A round brush with firm bristles used to assist in massaging during manicures and pedicures.

Item Code: BR/119



## Nail Brush

A Nail brush used remove dust off nails during preparation and overlays as well as clean under nails after gel removal.

Item Code: BR/116

# CURING UNITS



## SPECTRA LED Unit

- 30 second and 60 second curing
- Automatic sensor
- Self-activation 30 second or 60 second button
- 20 LED's
- Removable magnetic base plate
- Replaceable silicone pad protector, assisting clients with hand positioning
- Effective side wall and free edge curing
- On /off reset button

Item Code: CUR/SPECTRA



## V3 LED Unit

- 30 second curing
- Automatic sensor
- Self-activation button
- Light weight
- 16 LED's
- Removable magnetic base plate
- Replaceable silicone base pad protector
- Good side wall and free edge curing

Item Code: CUR/LED



## EVO LED Unit

- 30 second curing
- USB powered
- Light weight
- Compact

Item Code: CUR/E/B



## EVO LED Unit Cable

Item Code: CUR/E/CABLE



## V3 LED Silicon Bottom Pad

Item Code: CUR/SBP



# TIPS & ADHESIVES



**Refill Pack No. 9 Regular**  
50 Pack | Item Code: TA/125/R9



**Refill Pack No. 8 Regular**  
50 Pack | Item Code: TA/125/R8



**Refill Pack No. 7 Regular**  
50 Pack | Item Code: TA/125/R7



**Refill Pack No. 6 Regular**  
50 Pack | Item Code: TA/125/R6



**Refill Pack No. 5 Regular**  
50 Pack | Item Code: TA/125/R5



**Refill Pack No. 4 Regular**  
50 Pack | Item Code: TA/125/R4



**Refill Pack No. 3 Regular**  
50 Pack | Item Code: TA/125/R3



**Refill Pack No. 2 Regular**  
50 Pack | Item Code: TA/125/R2



**Refill Pack No. 1 Regular**  
50 Pack | Item Code: TA/125/R1



**Refill Pack No. 0 Regular**  
50 Pack | Item Code: TA/125/R0



**Nail Resin**  
10ml | Item Code: TA/122/BO



**Box with 250 Regular Tips**  
Item Code: TA/123/BXR

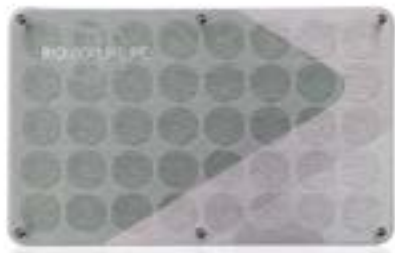


**Sculpture Moulds**  
100pcs - 10 Sizes  
Item Code: TA/120/BRT

# RETAIL STANDS



**Bio/Evo Wall Unit Combined**  
Item Code: STAND/WUC



**Bio Gel Tray**  
Item Code: STAND/DESK



**Small Gel Tray**  
Item Code: STAND/ATS



**Retail Display Stand**  
Item Code: STAND/RDS



**Desk Organiser**  
Item Code: STAND/DO

# PROMOTIONAL MATERIAL



**EVO Brochure**  
Item Code: PRO/E/BROCHURE



**Spa Brochure**  
Item Code: PRO/1631



**Gift Voucher**  
Item Code: PRO/1608



## Bio Lapel Pin

Item Code: PRO/1611



## Technician Badge

Item Code: PRO/1614



## EVO Wall Unit

Item Code: PRO/E/DISP

# BAGS



## Accessory Bag

Item Code: BAG/411



## Carry Bag

Item Code: BAG/409



## Client Card

Item Code: PRO/1609

# BIO SCULPTURE

## Decal Bio Sculpture

400 x 42mm | Item Code: PRO/1621

400 x 42mm Reversed | Item Code: PRO/1621/R

## BIO SCULPTURE

## Small Logo Sticker

100 x 11mm | Item Code: PRO/1622

100 x 11mm Reversed | Item Code: PRO/1622/R



## Home Care Bag

Item Code: BAG/408



## Retail Paper Bag

Large | Item Code: BAG/410/LP  
Small Gift Bag | Item Code: BAG/410/GP



## EVO Pop-Up Banner

Item Code: PRO/E/POPUP



## A3 Poster

Item Code: PRO/1627



## EVO Pull-Up Banner

Item Code: PRO/E/PULLUP



## Pedicure Bag

Item Code: BAG/Q040606



## Paper Packet Small

Item Code: BAG/410/SP





# BIO SCULPTURE